

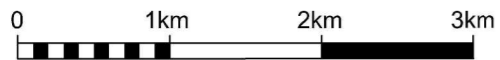


FIELDS OF GOLD (Weet Bits)

WARA Upside Down 12 Hour
10-11th February 2001

LEGEND

SCALE 1:50,000, 5 metre contour interval



- Building
- Control
- Contours
- Dams
- Hash House
- Magnetic North Line
- Out of Bounds
- Pipeline
- Railway, Abandoned
- Road, Bitumen
- Road, Major Gravel
- Road, Minor Gravel
- Watercourse
- Water Drop

SETTERS AND VETTERS

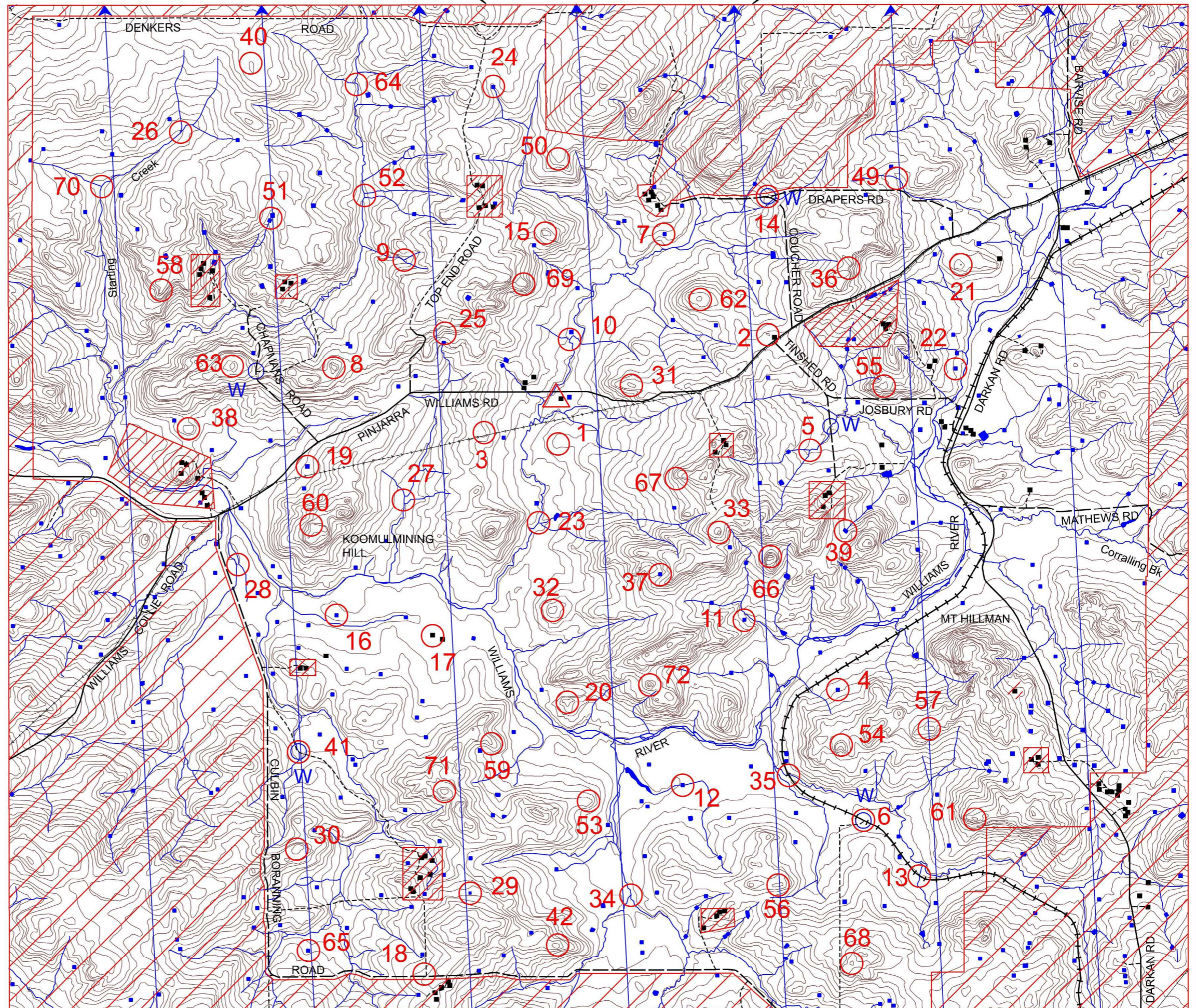
- | | |
|----------------|---------------|
| Gordon Birch | Owen Horton |
| Ian Mason | Ashley Horton |
| Linda Liebenau | |
| Sandra Swain | |

SPECIAL THANKS TO THE FARMERS

- A & J Chitty
- W & R Cresswell
- P & G Earnshaw
- A Higham
- H Higham
- G & S Ford
- D & J Lavender
- G & G Klug
- H & S Klug
- W & K Newton-Wordsworth
- H & S Panizza
- V & N Pascoe
- P & S Paterson
- W & E Petchell
- G Prowse
- R Tucker
- L Wilson
- D Wright

Possession of this map does not give right of entry to this area.

This map was produced using OCAD. Data supplied by DOLA and used under copy licence 393/93. Thanks to David Chiang of DOLA.



FIELDS OF GOLD (WEET BITS) WARA UPSIDE DOWN 12 HOUR 10TH-11TH FEBRUARY 2001

NO	DESCRIPTION	POINTS
1	THE BROAD SPUR	20
2	LARGE ROCK SURFACE NORTH EDGE	20
3	A ROCKY OUT CROP	20
4	THE DAM NORTH EDGE	20
5	A CREEK JUNCTION	20
6	A TRACK/EMBANKMENT JUNCTION/WATER DROP	20
7	THE DAM (40M @ 180 degrees)	30
8	THE KNOLL	30
9	THE CREEK JUNCTION	30
10	THE CREEK JUNCTION	30
11	THE DAM N/W CORNER	30
12	THE DAM 30M EAST	30
13	A CREEK TRACK JUNCTION /BEND	30
14	THE TRACK JUNCTION/WATER DROP	30
15	THE KNOLL	30
16	THE DAM NE EDGE	30
17	A OLD GRAIN SHED	30
18	THE TRACK/GATE JUNCTION	30
19	THE DAM	40
20	THE KNOLL	40
21	THE KNOLL	40
22	THE DAM EAST SIDE	40
23	A BEND IN THE STREAM	40
24	THE DAM SE CORNER	40
25	HEAD OF A GULLY	40
26	THE CREEK JUNCTION	40
27	A CREEK JUNCTION	40
28	THE CREEK/FENCE JUNCTION	40
29	THE DAM NORTH SIDE	40
30	THE BROAD KNOLL	40
31	THE KNOLL EASTERN SIDE	50
32	THE KNOLL	50
33	THE KNOLL, CAUTION 3 METRE CLIFF SOUTH SIDE	50

NO	DESCRIPTION	POINTS
34	THE CREEK JUNCTION	50
35	A OLD RAILWAY BRIDGE SOUTH SIDE	50
36	HEAD OF A GULLY	50
37	THE DAM N/E CORNER	60
38	THE KNOLL, ON A DEAD TREE	60
39	THE DAM SOUTH WEST CORNER	60
40	THE BROAD SUMMIT NORTH SIDE	60
41	WATER DROP CREEK/TRACK CROSSING (20m @ 180degrees)	60
42	THE SUMMIT	60
49	THE CREEK ON VEGETATION BORDER	70
50	THE SPUR	70
51	A DAM	70
52	BEND IN THE CREEK AT A JUNCTION	70
53	THE SPUR EASTERN SIDE	70
54	THE KNOLL NORTH EDGE	70
55	THE KNOLL	80
56	THE KNOLL	80
57	THE KNOLL	80
58	SOUTHERN EDGE OF A LONG FLAT SUMMIT	80
59	THE ROCKY SPUR	80
60	THE ROCKY SPUR, CAUTION (3 METRE CLIFF NORTH SIDE)	80
61	THE KNOLL	90
62	THE SUMMIT	90
63	THE KNOLL	90
64	A BEND IN THE CREEK	90
65	THE DAM SOUTHERN EDGE	90
66	THE KNOLL	90
67	TWO LARGE BOULDERS AT FOOT OF SPUR	100
68	THE ROCKY KNOLL	100
69	THE SMALL KNOLL	100
70	A CREEK JUNCTION	100
71	THE KNOLL	100
72	THE SMALL ROCKY KNOLL	100